

CHIP LC FILTERS

CHIP LC FILTERS

Features

1. Newly developed for prominent EMI attenuation at high speed signal lines.
2. Terminal electrode has excellent solder heat resistance for soldering.

Applications

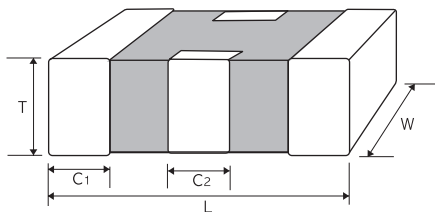
1. High resolution video signal lines.
2. EMI countermeasure for clock signal lines.

Ordering Information

LC - 2012 - 250 - J T
(1) (2) (3) (4) (5)

- | | |
|--|--|
| <p>(1) Series
LC : Chip LC filter</p> <p>(2) Dimensions
First two digits : length(mm)
Last two digits : width(mm)</p> <p>(3) Cut-off frequency
First two digits are frequency value in MHz.
Last digit is the number of zeros.</p> | <p>(4) Termination
J : Nickel barrier</p> <p>(5) Packaging
B : Bulk Package
T : Tape & Reel (ø 178mm [7 inches])
L : Tape & Reel (ø 254mm [10 inches])</p> |
|--|--|

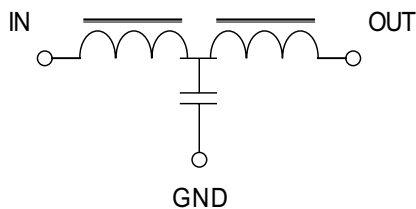
Shape and Dimensions



unit : mm [inches]

Type	L	W	T	C ₁	C ₂
LC-2012	2.0 ± 0.2 [.079 ± .008]	1.25 ± 0.2 [.049 ± .008]	0.8 ± 0.2 [.031 ± .008]	0.3 ± 0.2 [.012 ± .008]	0.4 ± 0.2 [.016 ± .008]

Equivalent circuit



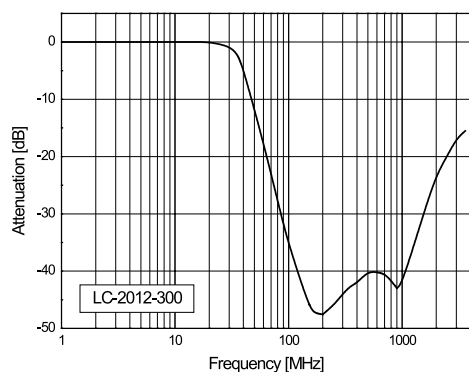
The LC series has no polarity

Specifications

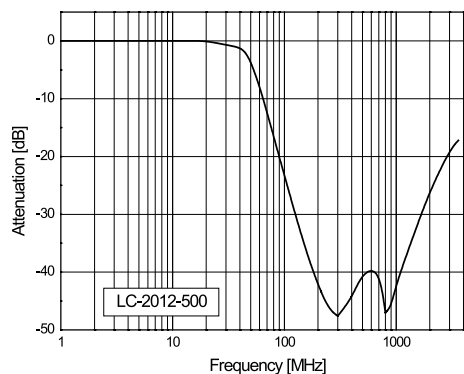
Part No.	Cut-off Frequency	20dB Attenuation Frequency range	DC Resistance	Rated Current	Rated Voltage
LC-2012-300□□	30MHz	65-2500MHz	800 m Ω max.	300 mA max.	10Vdc max
LC-2012-500□□	50MHz	90-2500MHz			
LC-2012-101□□	100MHz	210-2500MHz			
LC-2012-151□□	150MHz	350-2500MHz			

Electrical Characteristics

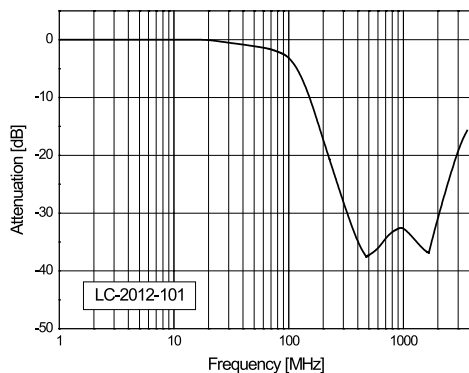
LC-2012-300



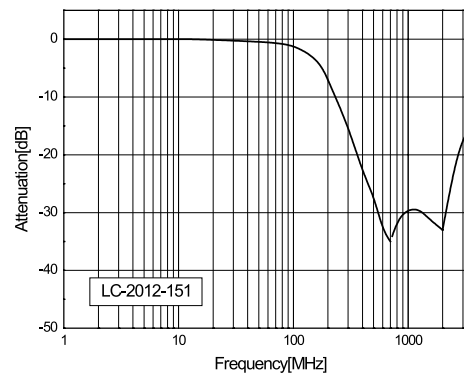
LC-2012-500



LC-2012-101



LC-2012-151



MEMO

Lined area for writing the memo content.